

## Maintaining the Electrical Equipment on Your Property

If you have an overhead powerline on your property, you may own the assets. You are legally responsible to maintain the electrical equipment on your property – such as poles and overhead wires – in a safe manner and in compliance with the Ontario Electrical Safety Code.

This includes safely maintaining tree growth and plant material around overhead powerlines to avoid potential electrical hazards. If you're not sure how to determine ownership of the powerlines and related equipment, contact your Local Distribution Company for more information.

### Electrical Hazards Near Powerlines

#### DIRECT CONTACT

Contact with overhead powerlines can happen when using tools such as ladders, pole top pruners and other trimming equipment to trim or remove trees. Branches and limbs caught in the powerlines may become conductive.


#### INDIRECT CONTACT

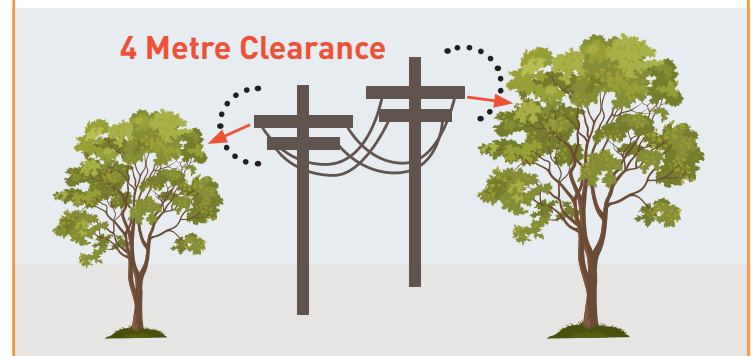
During tree trimming and maintenance activity, branches, people and equipment in close proximity to the overhead powerlines can conduct electricity. You don't even need to touch a powerline to receive a potentially deadly shock. Electricity can arc (jump) to you and your tools if you get too close.

#### DOWNED POWERLINES

Energized powerlines can be pulled down by broken branches and limbs. Anyone standing near the downed powerlines is at risk. Always stay at least 10 metres (33 feet) from a downed wire.



 Getting too close to a powerline can have lethal consequences.



### Understanding Code Requirements

Rule 75-712 of the Code requires owners of privately-owned powerlines to trim and maintain all trees and woody growth so that a minimum clearance of four metres is around the powerlines.

#### Follow these steps to safely trim trees near powerlines:

- It is strongly recommended that tree-trimming maintenance be completed by a Utility Arborist who has been trained to prune and trim trees around powerlines.
- If you plan to hire someone other than a Utility Arborist to trim or remove trees near the powerlines, it is strongly recommended to make arrangements with the Local Distribution Company to have the powerlines safely disconnected at the source prior to starting work and while the work is being performed.

#### Planting New Trees – Plan Ahead

- Avoid planting trees under or around powerlines and electrical equipment. Plan ahead by determining the tree's height and width at maturity based on the Plant Hardiness Index and Plant Hardiness Geographical Map. For more details see the "Tree Planting Guidelines" in the Resources section at [www.esasafe.com/treetrimming](http://www.esasafe.com/treetrimming).